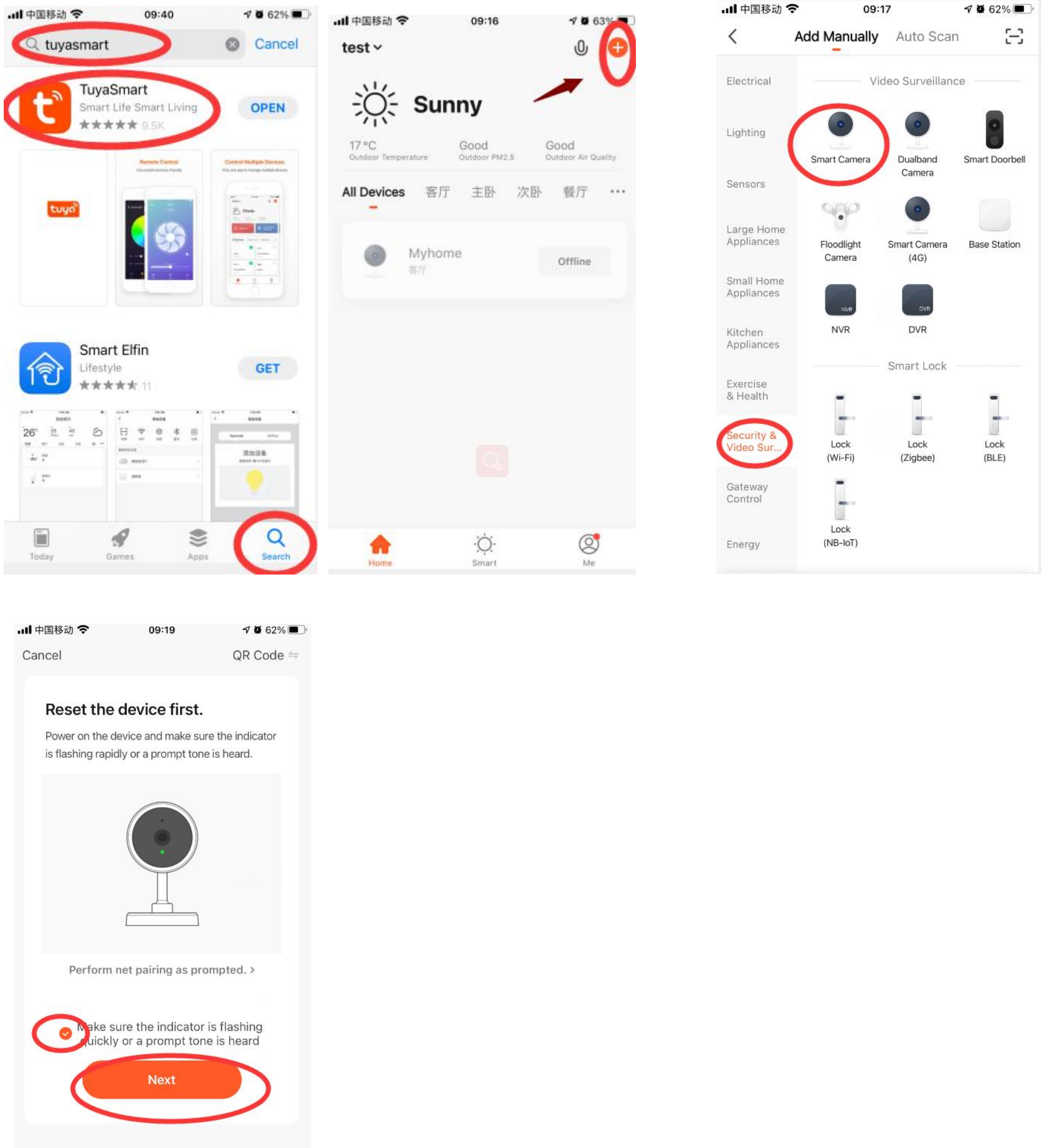


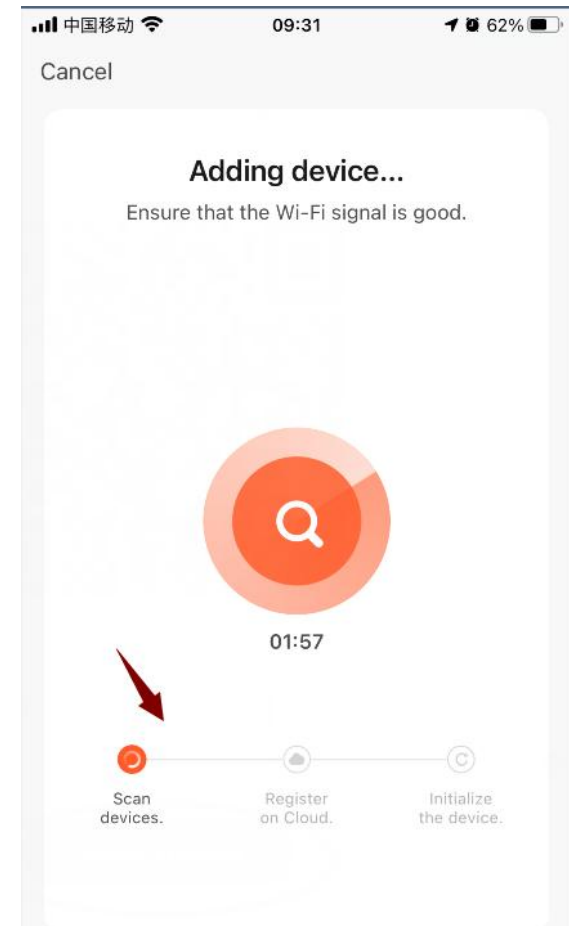
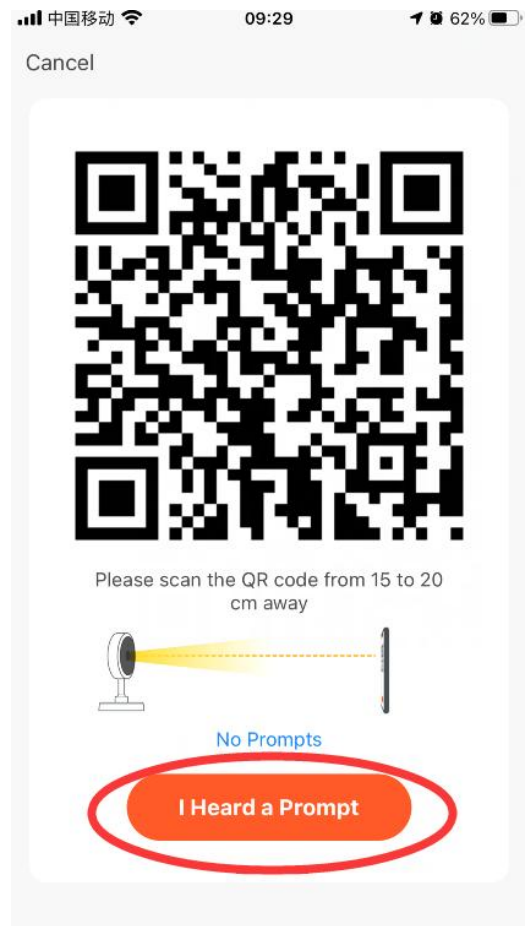
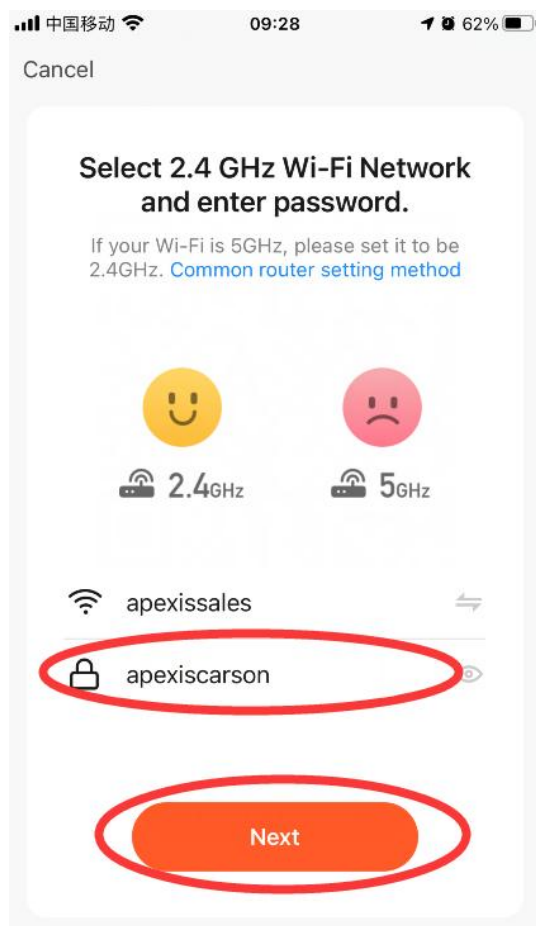
Tuya App Simple Quick Simple Guide

Download and install Tuya Smart App, Then Turn on or power up the camera, run the App,Click” Add Device”--”Security & Video Surveillance”--”Smart Camera”; After confirm the indicator continuously flashing or hearing the sound tip, click “Next”,See screenshot as below:



Make sure your Smartphone connecting to the 2.4Ghz wifi(5Ghz Wifi not supported), then you will see the app require to input the wifi password, after input password, it will auto create a QR code for the camera to setup wifi connection. Put the camera lens face to the QR Code with distance around 15-20cm, then camera will auto scan the QR code to setup wifi connection.(if can not scan, try different distance say 10cm, 13cm..etc). Once scan successfully, you will hear voice tip from camera “scan successfully, connecting”

--Click "I heard a Prompt",then camera will start connecting,wait until it setup successfully, you can operate the camera by then..



For More Settings, Click "Edit" to do it.

